

CPC Product Brochure

V2021JAN



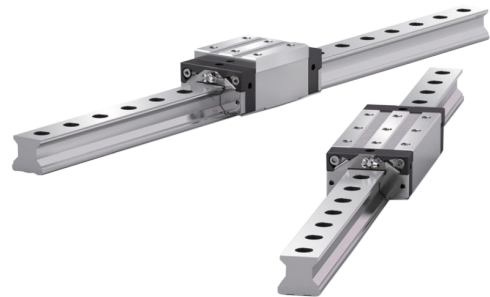
6.1 Miniature Linear Guide



6.2 Miniature Stroke Slide



6.3 Ball Linear Guide



6.4 Roller Linear Guide

Chieftek Precision Co. Ltd. (cpc) was established in 1998. The company with focus towards R&D and long term sustainability manufactures high quality linear motion components like Linear Guides and Linear Motors.

Table of contents

6.1 Miniature Linear Guide	6.1	6.4 Roller Linear Guide	6.4 - 6.5
6.1.1 MR Series	6.1	6.4.1 ARR Series	6.4
6.2 Miniature Stroke Slide	6.1	6.4.2 HRR Series	6.5
6.2.1 ST MINIATURE STROKE SLIDE	6.1	6.4.3 LRR Series	6.5
6.3 Ball Linear Guide	6.2 - 6.4		
6.3.1 ARC Series	6.2		
6.3.2 HRC Series	6.3		
6.3.3 ERC Series	6.3		
6.3.4 WRC Series	6.4		

6.1 Miniature Linear Guide

CPC MR is miniature Ball linear Guide Series. It features high load, high moment function, unique ball recirculation design, steel plate reinforcement design, dust proof design and lubrication design etc.

6.1.1 MR SERIES



Industries it caters to

Precision Measurement and Inspection
Electronic Part Manufacturer

Selection Parameters

Parameters	Min	Max
Rail Width	2 mm	42 mm
Assembly Height	3.2 mm	16 mm
Dynamic Load	158 N	6.7 KN
Static Load	349 N	12.58 KN

6.2 Miniature Stroke Slide

CPC ST Miniature Stroke Slide series is designed with two rows of balls. It features high load and high moment capacity, high running accuracy and smoothness, easy mounting etc.

6.2.1 ST MINIATURE STROKE SLIDE



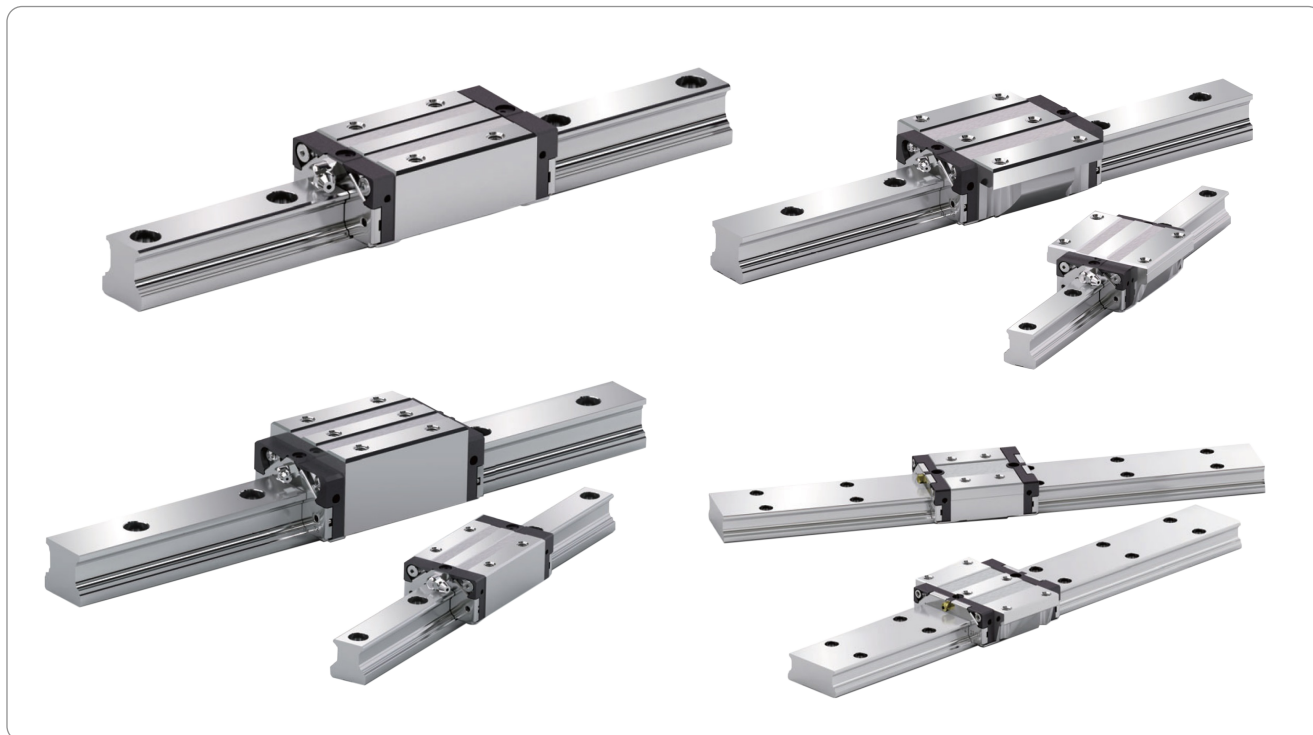
Industries it caters to

Maintenance and Inspection

Selection Parameters

Parameters	Min	Max
Rail Width	7 mm	12 mm
Assembly Height	8 mm	13 mm
Dynamic Load	910 N	4.05 KN
Static Load	1.58 KN	8.67 KN
Maximum Stroke	27 mm	94 mm

6.3 Ball Linear Guide



6.3.1 ARC SERIES



Selection Parameters

Parameters	Min	Max
Rail Width	15 mm	53 mm
Assembly Height	24 mm	70 mm
Dynamic Load	7.7 KN	147 KN
Static Load	12.1 KN	226 KN

CPC Ball Linear Guides automation series ARC use four row recirculating steel balls. They have advance features like built in lubricant storage and supply system, patented reinforcement plate design and high rigidity.

Industries it caters to

Precision Measurement and Inspection
Electronic Part Manufacturer
Machine Tool Manufacturer

Product application

Conveyance System
Industrial Robots
Woodworking Machine
Injection Moulding Machine
CNC Machining Center

6.3 Ball Linear Guide (continued)

6.3.2 HRC SERIES



Selection Parameters

Parameters	Min	Max
Rail Width	15 mm	53 mm
Assembly Height	24 mm	80 mm
Dynamic Load	9.9 KN	147 KN
Static Load	17.5 KN	226 KN

CPC Ball linear guides heavy load series HRC use four row recirculating steel balls. They have advance features like built in lubricant storage and supply system, patented reinforcement plate design and high rigidity.

Industries it caters to

Precision Measurement and Inspection

Electronic Part Manufacturer

Machine Tool Manufacturer

Product application

Conveyance System

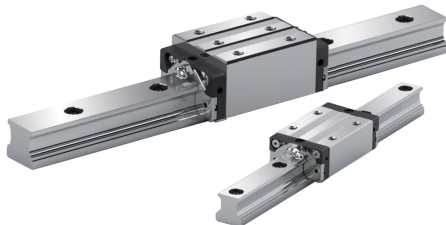
Industrial Robots

Woodworking Machine

Injection Moulding Machine

CNC Machining Center

6.3.3 ERC SERIES



Selection Parameters

Parameters	Min	Max
Rail Width	23 mm	23 mm
Assembly Height	36 mm	36 mm
Dynamic Load	24.8 KN	30.7 KN
Static Load	42.5 KN	57.7 KN

CPC Ball linear guides heavy load series ERC use four row recirculating steel balls. They have advance features like built in lubricant storage and supply system, patented reinforcement plate design and high rigidity.

Industries it caters to

Precision Measurement and Inspection

Electronic Part Manufacturer

Machine Tool Manufacturer

Product application

Conveyance System

Industrial Robots

Woodworking Machine

Injection Moulding Machine

CNC Machining Center

6.3 Ball Linear Guide (continued)

6.3.4 WRC SERIES



Selection Parameters

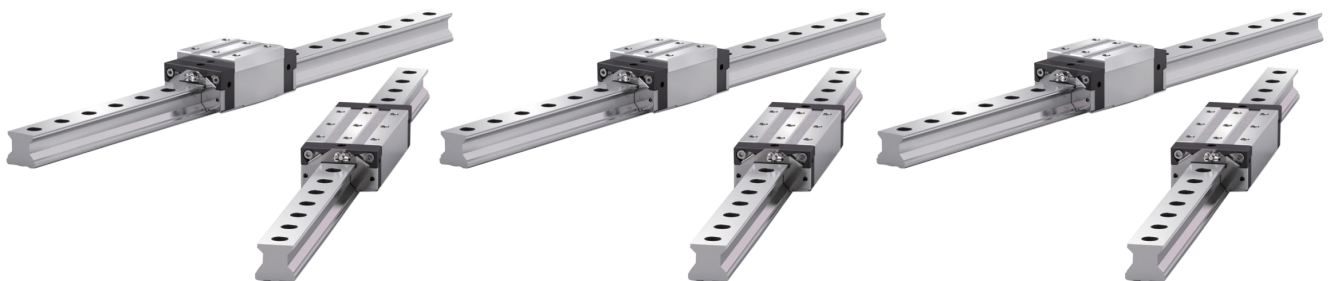
Parameters	Min	Max
Rail Width	15 mm	53 mm
Assembly Height	24 mm	80 mm
Dynamic Load	9.9 KN	147 KN
Static Load	17.5 KN	226 KN

Industries it caters to

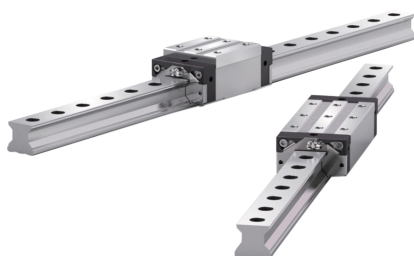
Precision Measurement and Inspection
Electronic Part Manufacturer

CPC Ball linear guides Wide rail series WRC is designed with ball chain patented design. This helps in keeping high contact area between ball and chain which results in high speed, low noise operations.

6.4 Roller Linear Guide



6.4.1 ARR SERIES



Selection Parameters

Parameters	Min	Max
Rail Width	34 mm	45 mm
Assembly Height	44 mm	70 mm
Dynamic Load	57 KN	172.5 KN
Static Load	133 KN	410 KN

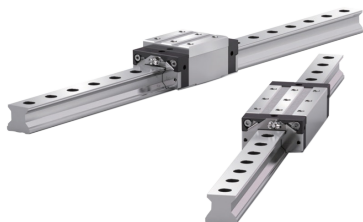
Industries it caters to

Precision Measurement and Inspection
Electronic Part Manufacturer

CPC Roller linear guides comes in extra low profile, low profile and high profile type. These are available in 35 and 45 size. The distinguishing points are, it comes with High-Rigidity Stainless-Steel Reinforcement Plate, Full cover seal and metal plastic cap. The roller blocks are available in Square and Flanged Version.

6.4 Roller Linear Guide (continued)

6.4.2 HRR SERIES



Selection Parameters

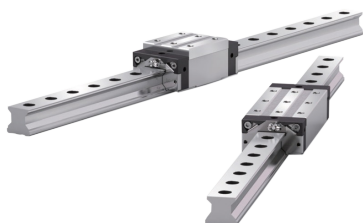
Parameters	Min	Max
Rail Width	15 mm	53 mm
Assembly Height	24 mm	80 mm
Dynamic Load	9.9 KN	147 KN
Static Load	17.5 KN	226 KN

Industries it caters to

Precision Measurement and Inspection
Electronic Part Manufacturer

CPC Roller linear guides comes in extra low profile, low profile and high profile type. These are available in 35 and 45 size. The distinguishing points are, it comes with High-Rigidity Stainless-Steel Reinforcement Plate, Full cover seal and metal plastic cap. The roller blocks are available in Square and Flanged Version.

6.4.3 LRR S SERIES



Selection Parameters

Parameters	Min	Max
Rail Width	34 mm	45 mm
Assembly Height	44 mm	70 mm
Dynamic Load	57 KN	172.5 KN
Static Load	133 KN	410 KN

Industries it caters to

Precision Measurement and Inspection
Electronic Part Manufacturer

CPC Roller linear guides comes in extra low profile, low profile and high profile type. These are available in 35 and 45 size. The distinguishing points are, it comes with High-Rigidity Stainless-Steel Reinforcement Plate, Full cover seal and metal plastic cap. The roller blocks are available in Square and Flanged Version.