

OSBORN Product Brochure

V2021JAN



8.1 Plain Concentric Stud Style (Inch)



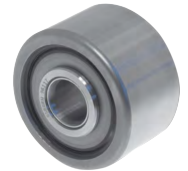
8.2 Plain Concentric Stud Style (Metric)



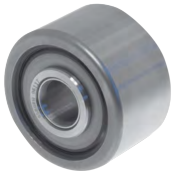
8.3 Plain Eccentric Stud Style (Inch)



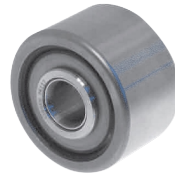
8.4 Plain Eccentric Stud Style (Metric)



8.5 Plain Yoke Style (Inch)



8.6 Plain Yoke Style (Metric)



8.7 Crowned Yoke Style (Inch)



8.8 V-Grooved Concentric Stud Style (Metric)



8.9 V-Grooved Concentric Stud Style (Inch)



8.10 V-Grooved Eccentric Stud Style (Inch)



8.11 V-Grooved Eccentric Stud Style (Metric)



8.12 V-Grooved Yoke Style (Inch)



8.13 V-Grooved Yoke Style (Metric)



8.14 Flanged Concentric Stud Style (Metric)



8.15 Flanged Concentric Stud Style (Inch)



8.16 Flanged Eccentric Stud Style (Metric)



8.17 Flanged Eccentric Stud Style (Inch)



8.18 Flanged Yoke Style (Inch)



8.19 Flanged Yoke Style (Metric)



8.20 Heavy-Duty Concentric Shafts for Yoke Style Idler-Rollers (Inch)

OSBORN is established in 1887 in Cleveland, the USA which is a global leader in manufacturing surface treatment & finishing products. Osborn Load runners or Cam followers are one of the world's leading idler roller & rail solution which is used in all types of industries such as Metal(Steel Mills, Foundries), Pulp & Paper Mills, Automotive, Food & Pharmaceutical, Mining, Agriculture, Cement Industry, Machine Tools manufacturers, Distribution & Warehousing, Cranes, Entertainment & Amusements(Water parks), Waste recycling, etc. Osborn Load Runners are available in different types such as plain, flanged, V-grooved, and crowned roller styles with hardened steel, stainless steel, and non-metallic tread surfaces. Osborn load rails are available in different shapes that are suitable for above load runners.

OSBORN Product Brochure

V2021JAN



8.21 Heavy-Duty Concentric Shafts for Yoke Style Idler-Rollers (Metric)



8.22 Heavy-Duty Eccentric Shafts for Yoke Style Idler-Rollers



8.23 Double-Flanged Concentric Stud Style (Inch)



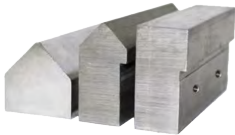
8.24 Flanged Crown Concentric (Inch)



8.25 Flanged Crown Eccentric (Inch)



8.26 Cam Runner



8.27 Load Rails



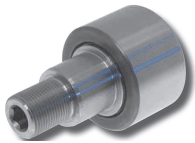
8.28 Stainless Steel Concentric Stud Plain Style (Inch)



8.29 Stainless Steel Concentric Stud V-grooved (Inch)



8.30 Stainless Steel Concentric Stud Flanged (Inch)



8.31 Stainless Steel Eccentric Stud Plain Style (Inch)



8.32 Stainless Steel Eccentric Stud V-grooved (Inch)



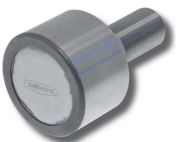
8.33 Stainless Steel Eccentric Stud Flanged (Inch)



8.34 High Temp Load Runners Concentric V-grooved (Inch)



8.35 High Temp Load Runners Concentric Flanged (Inch)



8.36 High Temp Load Runners Concentric Plain Style (Inch)



8.37 Nylon Tread Load Runners - Concentric Stud Style (Inch)



8.38 Nylon Tread Load Runners - Eccentric Stud Style (Inch)



8.39 Urethane Tread Concentric (Inch)



8.40 Urethane Tread Eccentric (Inch)

OSBORN is established in 1887 in Cleveland, the USA which is a global leader in manufacturing surface treatment & finishing products. Osborn Load runners or Cam followers are one of the world's leading idler roller & rail solution which is used in all types of industries such as Metal(Steel Mills, Foundries), Pulp & Paper Mills, Automotive, Food & Pharmaceutical, Mining, Agriculture, Cement Industry, Machine Tools manufacturers, Distribution & Warehousing, Cranes, Entertainment & Amusements(Water parks), Waste recycling, etc. Osborn Load Runners are available in different types such as plain, flanged, V-grooved, and crowned roller styles with hardened steel, stainless steel, and non-metallic tread surfaces. Osborn load rails are available in different shapes that are suitable for above load runners.

Table of contents

8.1 Plain Concentric Stud Style (Inch)	8.1	8.15 Flanged Concentric Stud Style (Inch)	8.8
8.2 Plain Concentric Stud Style (Metric)	8.1	8.16 Flanged Eccentric Stud Style (Metric)	8.8
8.3 Plain Eccentric Stud Style (Inch)	8.2	8.17 Flanged Eccentric Stud Style (Inch)	8.9
8.4 Plain Eccentric Stud Style (Metric)	8.2	8.18 Flanged Yoke Style (Inch)	8.9
8.5 Plain Yoke Style (Inch)	8.3	8.19 Flanged Yoke Style (Metric)	8.10
8.6 Plain Yoke Style (Metric)	8.3	8.20 Heavy-Duty Concentric Shafts for Yoke Style Idler-Rollers (Inch)	8.10
8.7 Crowned Yoke Style (Inch)	8.4	8.21 Heavy-Duty Concentric Shafts for Yoke Style Idler-Rollers (Metric)	8.11
8.8 V-Grooved Concentric Stud Style (Metric)	8.4	8.22 Heavy-Duty Eccentric Shafts for Yoke Style Idler-Rollers (Inch)	8.11
8.9 V-Grooved Concentric Stud Style (Inch)	8.5	8.23 Double-Flanged Concentric Stud Style (Inch)	8.12
8.10 V-Grooved Eccentric Stud Style (Inch)	8.5	8.24 Flanged Crown Concentric (Inch)	8.12
8.11 V-Grooved Eccentric Stud Style (Metric)	8.6	8.25 Flanged Crown Eccentric (Inch)	8.12
8.12 V-Grooved Yoke Style (Inch)	8.6	8.26 Cam Runner	8.13
8.13 V-Grooved Yoke Style (Metric)	8.7		
8.14 Flanged Concentric Stud Style (Metric)	8.7		

Table of contents

8.27 Load Rails	8.13	8.35 High Temp Load Runners Concentric Flanged (Inch)	8.18
8.28 Stainless Steel Concentric Stud Plain Style (Inch)	8.14	8.36 High Temp Load Runners Concentric Plain Style (Inch)	8.18
8.29 Stainless Steel Concentric Stud V-grooved (Inch)	8.14	8.37 Nylon Tread Load Runners – Concentric Stud Style (Inch)	8.1
8.30 Stainless Steel Concentric Stud Flanged (Inch)	8.15	8.38 Nylon Tread Load Runners – Eccentric Stud Style (Inch)	8.18
8.31 Stainless Steel Eccentric Stud Plain Style (Inch)	8.15	8.39 Urethane Tread Concentric (Inch)	8.19
8.32 Stainless Steel Eccentric Stud V-grooved (Inch)	8.16	8.40 Urethane Tread Eccentric (Inch)	8.19
8.33 Stainless Steel Eccentric Stud Flanged (Inch)	8.17		
8.34 High Temp Load Runners Concentric V-grooved (Inch)	8.17		

8.1 Plain Concentric Stud Style (Inch)

Engineering expertise and manufacturing skills are what set the Load Runners brand



Osborn Plain Concentric Stud style(Inch Series) load runner consist of items such as PLR-1, PLR-1-1/8, PLR-1-1/4, PLR-1-3/8, PLR-1-1/2, PLR-1-3/4, PLR-1-3/4-5, PLR-2, PLR-2-3, PLR-2-1/4, PLR-2-1/2, PLR-2-1/2-10, PLR-2-1/2-16, PLR-2-3/4, PLR-3, PLR-3-1/4, PLR-3-1/2, PLR-4, PLR-4-1/2, PLR-5, PLR-6, PLR-7, PLR-8, PLR-10, PLR-10-1.

Industries it caters to

Primary Metals
Oilfield and Petrochemical
Automotive
Off-Highway
Aggregate and Mining
Kinetic Architecture
Food and Pharmaceutical

Selection parameters

Parameters	Min	Max
Roller diameter	1 inch	10 inch
Roller width	0.781 inch	5 inch
Stud diameter	0.437 inch	4.250 inch
Stud length	1 inch	9 inch
Radial Load static limit	230 lbs	159800
Static Thrust	140 lbs	lbs

8.2 Plain Concentric Stud Style (Metric)

Engineering expertise and manufacturing skills are what set the Load Runners brand



OSBORN Plain Concentric Stud Style(metric) load runner consist of items such as HPC-26, HPC-30, HPC-32, HPC-35, HPC-40, HPC-40-1, HPC-47, HPC-50, HPC-52, HPC-62, HPC-62-1, HPC-72, HPC-76, HPC-80, HPC-85, HPC-90, HPC-100, HPC-100-1, HPC-125, HPC-150, HPC-200.

Industries it caters to

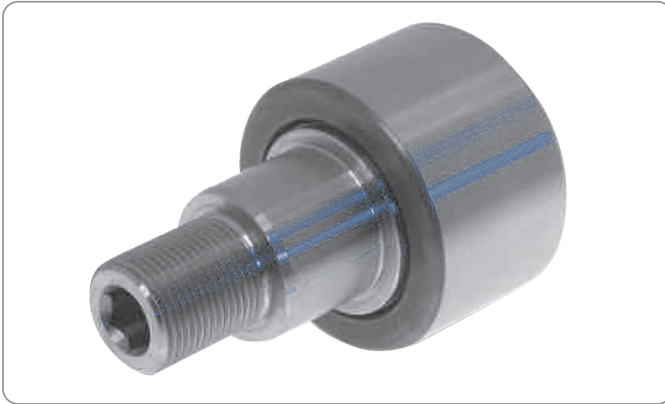
Primary Metals
Oilfield and Petrochemical
Automotive
Off-Highway
Aggregate and Mining
Kinetic Architecture
Food and Pharmaceutical

Selection parameters

Parameters	Min	Max
Roller diameter	26 mm	200 mm
Roller width	20 mm	76 mm
Stud diameter	10 mm	64 mm
Stud length	23 mm	140 mm
Radial Load static limit	1000 N	250880 N
Static Thrust	620 N	147240 N

8.3 Plain Eccentric Stud Style (Inch)

Engineering expertise and manufacturing skills are what set the Load Runners brand



OSBORN Plain Eccentric Stud Style (inch) load runner consist of items such as PLRE-1, PLRE-1-1/8, PLRE-1-1/4, PLRE-1-3/8, PLRE-1-1/2, PLRE-1-3/4, PLRE-2, PLRE-2-1/4, PLRE-2-1/2, PLRE-2-1/2-7, PLRE-2-3/4, PLRE-3, PLRE-3-1/4, PLRE-3-1/2, PLRE-4, PLRE-5, PLRE-6.

Industries it caters to

- Primary Metals
- Oilfield and Petrochemical
- Automotive
- Off-Highway
- Aggregate and Mining
- Kinetic Architecture
- Food and Pharmaceutical

Selection parameters

Parameters	Min	Max
Roller diameter	1 inch	6 inch
Roller width	0.781 inch	3 inch
Stud diameter	0.437 inch	2.5 inch
Stud length	1 inch	5.5 inch
Radial Load static limit	230 lbs	56400 lbs
Static Thrust	140 lbs	33100 lbs

8.4 Plain Eccentric Stud Style (Metric)

Engineering expertise and manufacturing skills are what set the Load Runners brand



OSBORN Plain Eccentric Stud Style (metric) load runner consist of items such as HPCE-26, HPCE-30, HPCE-32, HPCE-35, HPCE-40-1, HPCE-47, HPCE-50, HPCE-52, HPCE-62, HPCE-62-1, HPCE-72, HPCE-76-1, HPCE-80, HPCE-85, HPCE-90, HPCE-100, HPCE-125, HPCE-150.

Industries it caters to

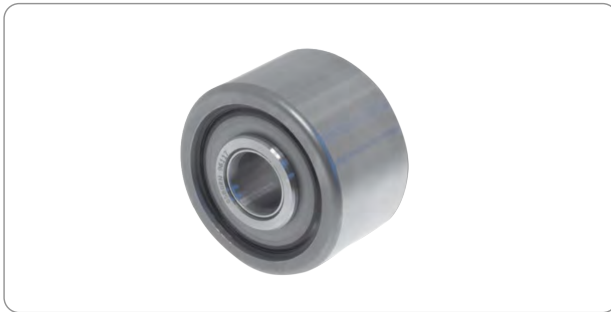
- Primary Metals
- Oilfield and Petrochemical
- Automotive
- Off-Highway
- Aggregate and Mining
- Kinetic Architecture
- Food and Pharmaceutical

Selection parameters

Parameters	Min	Max
Roller diameter	26 mm	150 mm
Roller width	20 mm	76 mm
Stud diameter	10 mm	64 mm
Stud length	23 mm	140 mm
Radial Load static limit	1000 N	250880 N
Static Thrust	620 N	147240 N

8.5 Plain Yoke Style (Inch)

Engineering expertise and manufacturing skills are what set the Load Runners brand



OSBORN Plain Yoke Style (inch) load runner consist of items such as PLRY-1-1/2, PLRY-1-3/4, PLRY-2, PLRY-2-1/4, PLRY-2-1/2, PLRY-2-1/2-7, PLRY-2-3/4-7, PLRY-3, PLRY-3-1/4, PLRY-3-1/2, PLRY-4, PLRY-5, PLRY-6, PLRY-7, PLRY-8, PLRY-9, PLRY-10.

Industries it caters to

Primary Metals
Oilfield and Petrochemical
Automotive
Off-Highway
Aggregate and Mining
Kinetic Architecture
Food and Pharmaceutical

Selection parameters

Parameters	Min	Max
Roller diameter	1.5 inch	10 inch
Roller width	0.937 inch	5.5 inch
Tread width	0.875 inch	5.250 inch
Bore	0.437 inch	4.255 inch
Shoulder diameter	0.875 inch	6.5 inch
Shoulder length	0.031 inch	0.125 inch
Radial Load static limit	780 lbs	276000
Static Thrust	480 lbs	lbs

8.6 Plain Yoke Style (Metric)

Engineering expertise and manufacturing skills are what set the Load Runners brand



OSBORN Plain Yoke Style (metric) load runner consist of items such as HPCA-40, HPCA-50, HPCA-62, HPCA-62-2, HPCA-76, HPCA-80, HPCA-85, HPCA-90, HPCA-100, HPCA-125, HPCA-150, HPCA-200, HPCA-250.

Industries it caters to

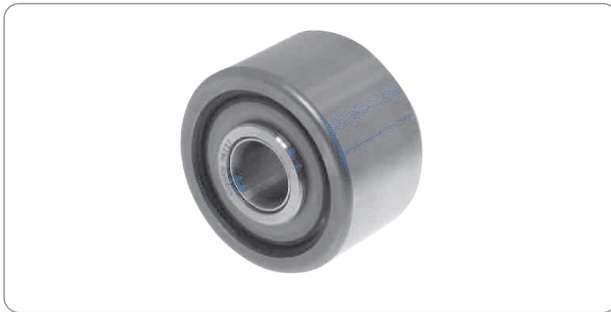
Primary Metals
Oilfield and Petrochemical
Automotive
Off-Highway
Aggregate and Mining
Kinetic Architecture
Food and Pharmaceutical

Selection parameters

Parameters	Min	Max
Roller diameter	40 mm	250 mm
Roller width	23 mm	79 mm
Tread width	22 mm	76 mm
Bore	10 mm	70 mm
Shoulder diameter	22 mm	108 mm
Shoulder length	0.5 mm	1.5 mm
Radial Load static limit	3460 N	354970 N
Static Thrust	2140 N	215290 N

8.7 Crowned Yoke Style (Inch)

Engineering expertise and manufacturing skills are what set the Load Runners brand apart.



OSBORN Crowned Yoke Style (inch) load runner consist of items such as CLRY-1-1/2, CLRY-1-3/4, CLRY-2, CLRY-2-1/4, CLRY-2-1/2, CLRY-2-1/2-7, CLRY-3, CLRY-3-1/4, CLRY-3-1/2, CLRY-4, CLRY-5, CLRY-6, CLRY-7, CLRY-8, CLRY-9, CLRY-10.

Industries it caters to

Primary Metals
Oilfield and Petrochemical
Automotive
Off-Highway
Aggregate and Mining
Kinetic Architecture
Food and Pharmaceutical

Selection parameters

Parameters	Min	Max
Roller diameter	1.5 inch	10 inch
Roller width	0.937 inch	5.5 inch
Tread width	0.875 inch	5.250 inch
Bore	0.437 inch	4.255 inch
Shoulder diameter	0.875 inch	6.5 inch
Shoulder length	0.031 inch	0.125 inch
Radial Load static limit	780 lbs	50140 lbs
Static Thrust	480 lbs	50140 lbs

8.8 V-Grooved Concentric Stud Style (Metric)

Engineering expertise and manufacturing skills are what set the Load Runners brand



OSBORN V-Grooved Concentric Stud Style (metric) load runner consist of items such as HPV-26, HPV-32, HPV-40, HPV-62, HPV-62-1, HPV-76, HPV-100, HPV-100-1, HPV-125.

Industries it caters to

Primary Metals
Oilfield and Petrochemical
Automotive
Off-Highway
Aggregate and Mining
Kinetic Architecture
Food and Pharmaceutical

Selection parameters

Parameters	Min	Max
Roller diameter	40 mm	165 mm
Roller width	20 mm	76 mm
Tread width	26 mm	125 mm
Bore	10 mm	37.8 mm
Shoulder diameter	10 mm	48 mm
Shoulder length	23 mm	105 mm
Radial Load static limit	1000 N	216290 N
Static Thrust	620 N	108140 N

8.9 V-Grooved Concentric Stud Style (Inch)

Engineering expertise and manufacturing skills are what set the Load Runners brand



OSBORN V-Grooved Concentric Stud Style(inch) load runner consist of items such as VLR-1-1/2, VLR-2, VLR-2-1/2, VLR-3-1/2, VLR-3-1/2-16, VLR-4-1/2, VLR-5-1/2, VLR-6-1/2, VLR-7-1/2, VLR-8-1/2.

Industries it caters to

Primary Metals
Oilfield and Petrochemical
Automotive
Off-Highway
Aggregate and Mining
Kinetic Architecture
Food and Pharmaceutical

Selection parameters

Parameters	Min	Max
Roller diameter	1.5 inch	8.5 inch
Roller width	0.781 inch	3 inch
Tread width	1.125 inch	7 inch
Bore	0.391 inch	1.5 inch
Shoulder diameter	0.437 inch	2.5 inch
Shoulder length	1 inch	5.5 inch
Radial Load static limit	230 lbs	56400 lbs
Static Thrust	140 lbs	30850 lbs

8.10 V-Grooved Eccentric Stud Style (Inch)

Engineering expertise and manufacturing skills are what set the Load Runners brand apart.



OSBORN V-Grooved Eccentric Stud Style(inch) load runner consist of items such as VLRE-1-1/2, VLRE-2, VLRE-2-1/2, VLRE-3-1/2, VLRE-3-1/2-4, VLRE-5-1/2, VLRE-6-1/2, VLRE-7-1/2.

Industries it caters to

Primary Metals
Oilfield and Petrochemical
Automotive
Off-Highway
Aggregate and Mining
Kinetic Architecture
Food and Pharmaceutical

Product application

Coiled Tubing
Injection Systems
Power Tongs
Fracking

Selection parameters

Parameters	Min	Max
Roller diameter	1.5 inch	7.5 inch
Roller width	0.781 inch	3 inch
Tread width	1.125 inch	6 inch
Bore	0.391 inch	1.5 inch
Shoulder diameter	0.437 inch	2.5 inch
Shoulder length	1 inch	5.5 inch
Radial Load static limit	230 lbs	53860 lbs
Static Thrust	140 lbs	26930 lbs

8.11 V-Grooved Eccentric Stud Style (Metric)

Engineering expertise and manufacturing skills are what set the Load Runners brand apart.



OSBORN V-Grooved Eccentric Stud Style(metric) load runner consist of items such as HPVE-26, HPVE-32, HPVE-40, HPVE-62, HPVE-62-1, HPVE-76, HPVE-100, HPVE-125.

Product application

Coiled Tubing

Injection Systems

Power Tongs

Fracking

Industries it caters to

Primary Metals

Oilfield and Petrochemical

Automotive

Off-Highway

Aggregate and Mining

Kinetic Architecture

Food and Pharmaceutical

Selection parameters

Parameters	Min	Max
Roller diameter	40 mm	165 mm
Roller width	20 mm	76 mm
Tread width	26 mm	125 mm
Bore	10 mm	37.8 mm
Shoulder diameter	10 mm	48 mm
Shoulder length	23 mm	105 mm
Radial Load static Limit	1000 N	216290 N
Static Thrust	620 N	108140 N

8.12 V-Grooved Yoke Style (Inch)

Engineering expertise and manufacturing skills are what set the Load Runners brand apart.



OSBORN V-Grooved Yoke Style(inch) load runner consist of items such as VLRY-2-1/2, VLRY-3, VLRY-3-1/2-7, VLRY-3-3/4, VLRY-4-1/2, VLRY-5, VLRY-5-1/2, VLRY-6-1/2, VLRY-7-1/2, VLRY-8-1/2, VLRY-9-1/2, VLRY-10-1/2, VLRY-11-1/2.

Industries it caters to

Primary Metals

Oilfield and Petrochemical

Automotive

Off-Highway

Aggregate and Mining

Kinetic Architecture

Food and Pharmaceutical

Selection parameters

Parameters	Min	Max
Roller diameter	2.5 inch	11.5 inch
Roller width	0.937 inch	5.5 inch
Tread width	0.875 inch	5.250 inch
Point diameter	1.750 inch	10 inch
Groove location	0.468 inch	2.75 inch
Bore	0.437 inch	4.255 inch
Shoulder diameter	0.875 inch	6.5 inch
Shoulder length	0.031 inch	0.125 inch
Radial Load static limit	780 lbs	65220 lbs
Static Thrust	480 lbs	42610 lbs

8.13 V-Grooved Yoke Style (Metric)

Engineering expertise and manufacturing skills are what set the Load Runners brand apart.



OSBORN V-Grooved Yoke Style(metric) load runner consist of items such as HPVA-40, HPVA-50, HPVA-62, HPVA-62-2, HPVA-76, HPVA-100, HPVA-125, HPVA-150, HPVA-200, HPVA-250.

Industries it caters to

Primary Metals
Oilfield and Petrochemical
Automotive
Off-Highway
Aggregate and Mining
Kinetic Architecture
Food and Pharmaceutical

Selection parameters

Parameters	Min	Max
Roller diameter	60 mm	290 mm
Roller width	23 mm	79 mm
Tread width	22 mm	76 mm
Point diameter	40 mm	250 mm
Groove location	11.5 mm	39.5 mm
Bore	10 mm	70 mm
Shoulder diameter	22 mm	108 mm
Shoulder length	0.5 mm	1.5 inch
Radial Load static limit	3460 N	354970 N
Static Thrust	2140 N	199360 N

8.14 Flanged Concentric Stud Style (Metric)

Engineering expertise and manufacturing skills are what set the Load Runners brand



Flanged Concentric Stud Style(metric) load runner consist of items such as HPJ-26, HPJ-30, HPJ-32, HPJ-35, HPJ-40, HPJ-40-1, HPJ-47, HPJ-50, HPJ-52, HPJ-62, HPJ-62-2, HPJ-72, HPJ-76, HPJ-80, HPJ-85, HPJ-90, HPJ-100, HPJ-100-1, HPJ-125, HPJ-150, HPJ-200.

Industries it caters to

Primary Metals
Oilfield and Petrochemical
Automotive
Off-Highway
Aggregate and Mining
Kinetic Architecture
Food and Pharmaceutical

Selection parameters

Parameters	Min	Max
Roller diameter	26 mm	200 mm
Roller width	20 mm	76 mm
Flange diameter	35 mm	223 mm
Flange thickness	5 mm	18.3 mm
Stud diameter	10 mm	64 mm
Stud length	23 mm	140 mm
Radial Load static limit	1000 N	250880 N
Static Thrust	620 N	147240 N

8.15 Flanged Concentric Stud Style (Inch)

Engineering expertise and manufacturing skills are what set the Load Runners brand



OSBORN Flanged Concentric Stud Style (inch) load runner consist of items such as FLR-1, FLR-1-1/8, FLR-1-1/4, FLR-1-3/8, FLR-1-1/2, FLR-1-1/2-2, FLR-1-3/4, FLR-2, FLR-2-1/4, FLR-2-1/2, FLR-2-1/2-1, FLR-2-3/4, FLR-3, FLR-3-1/4, FLR-3-1/2, FLR-4, FLR-4M, FLR-4-1/2, FLR-5, FLR-6, FLR-7, FLR-8.

Industries it caters to

Primary Metals
Oilfield and Petrochemical
Automotive
Off-Highway
Aggregate and Mining
Kinetic Architecture
Food and Pharmaceutical

Selection parameters

Parameters	Min	Max
Roller diameter	1 inch	8 inch
Roller width	0.781 inch	3 inch
Flange diameter	1.375 inch	8.938 inch
Flange thickness	0.219 inch	0.718 inch
Stud diameter	0.437 inch	2.5 inch
Stud length	1 inch	5.5 inch
Radial Load static limit	230 lbs	56400 lbs
Static Thrust	140 lbs	33100 lbs

8.16 Flanged Eccentric Stud Style (Metric)

Engineering expertise and manufacturing skills are what set the Load Runners brand apart.



OSBORN Flanged Eccentric Stud Style (metric) load runner consist of items such as HPJE-26, HPJE-30, HPJE-32, HPJE-35, HPJE-40-1, HPJE-50, HPJE-62-1, HPJE-76, HPJE-90, HPJE-100, HPJE-125, HPJE-150.

Industries it caters to

Primary Metals
Oilfield and Petrochemical
Automotive
Off-Highway
Aggregate and Mining
Kinetic Architecture
Food and Pharmaceutical

Selection parameters

Parameters	Min	Max
Roller diameter	26 mm	150 mm
Roller width	20 mm	76 mm
Flange diameter	35 mm	173 mm
Flange thickness	5 mm	18.3 mm
Stud diameter	10 mm	64 mm
Stud length	23 mm	140 mm
Radial Load static limit	1000 N	250880 N
Static Thrust	620 N	147240 N

8.17 Flanged Eccentric Stud Style (Inch)

Engineering expertise and manufacturing skills are what set the Load Runners brand



OSBORN Flanged Eccentric Stud Style(inch) load runner consist of items such as FLRE-1, FLRE-1-1/8, FLRE-1-1/4, FLRE-1-3/8, FLRE-1-1/2, FLRE-1-3/4, FLRE-2, FLRE-2-1/4, FLRE-2-1/2, FLRE-2-1/2-4, FLRE-2-3/4, FLRE-3, FLRE-3-1/4, FLRE-3-1/2, FLRE-4, FLRE-4-1/2, FLRE-5, FLRE-6.

Industries it caters to

Primary Metals
Oilfield and Petrochemical
Automotive
Off-Highway
Aggregate and Mining
Kinetic Architecture
Food and Pharmaceutical

Selection parameters

Parameters	Min	Max
Roller diameter	1 inch	6 inch
Roller width	0.781 inch	3 inch
Flange diameter	1.375 inch	6.938 inch
Flange thickness	0.219 inch	0.718 inch
Stud diameter	0.437 inch	2.5 inch
Stud length	1 inch	5.5 inch
Radial Load static limit	230 lbs	56400 lbs
Static Thrust	140 lbs	33100 lbs

8.18 Flanged Yoke Style (Inch)

Engineering expertise and manufacturing skills are what set the Load Runners brand apart.



OSBORN Flanged Yoke Style(inch) load runner consist of items such as FLRY-1-1/2, FLRY-1-3/4, FLRY-2, FLRY-2-1/4, FLRY-2-1/2, FLRY-2-1/2-7, FLRY-2-3/4-7, FLRY-3, FLRY-3-1/4, FLRY-3-1/2, FLRY-4, FLRY-5, FLRY-6, FLRY-7, FLRY-8, FLRY-9, FLRY-10.

Industries it caters to

Primary Metals
Oilfield and Petrochemical
Automotive
Off-Highway
Aggregate and Mining
Kinetic Architecture
Food and Pharmaceutical

Selection parameters

Parameters	Min	Max
Roller diameter	1.5 inch	10 inch
Roller width	0.937 inch	5.5 inch
flange diameter	2.188 inch	10.937 inch
flange thickness	0.218 inch	0.72 inch
Tread width	0.872 inch	5.250 inch
Bore	0.437 inch	4.255 inch
Shoulder diameter	0.875 inch	6.5 inch
Shoulder length	0.031 inch	0.125 inch
Radial Load static limit	780 lbs	276000 lbs
Static Thrust	480 lbs	196000 lbs

8.19 Flanged Yoke Style (Metric)

Engineering expertise and manufacturing skills are what set the Load Runners brand apart.



OSBORN Flanged Yoke Style(metric) load runner consist of items such as HPJA-40, HPJA-50, HPJA-62, HPJA-62-2, HPJA-76, HPJA-80, HPJA-85, HPJA-90, HPJA-100, HPJA-125, HPJA-150, HPJA-200, HPJA-250.

Industries it caters to

Primary Metals
Oilfield and Petrochemical
Automotive
Off-Highway
Aggregate and Mining
Kinetic Architecture
Food and Pharmaceutical

Selection parameters

Parameters	Min	Max
Roller diameter	40 mm	250 mm
Roller width	23 mm	79 mm
flange diameter	54 mm	273 mm
flange thickness	6 mm	18.2 mm
Tread width	22 mm	76 mm
Bore	10 mm	70 mm
Shoulder diameter	22 mm	108 mm
Shoulder length	0.5 mm	1.5 mm
Radial Load static limit	3460 N	354970 N
Static Thrust	2140 N	215920 N

8.20 Heavy-Duty Concentric Shafts for Yoke Style Idler-Rollers (Inch)

Engineering expertise and manufacturing skills are what set the Load Runners brand



Industries it caters to

Primary Metals
Oilfield and Petrochemical
Automotive
Off-Highway
Aggregate and Mining
Kinetic Architecture
Food and Pharmaceutical

OSBORN Heavy-Duty Concentric Shafts for Yoke Style Idler-Rollers (Inch) load runner consist of items such as SHA-437, SHA-500, SHA-625, SHA-750, SHA-1000, SHA-1125, SHA-1250, SHA-1750, SHA-2250, SHA-2750, SHAB-3250, SHB-3750, SHB-4250.

Selection parameters

Parameters	Min	Max
Head diameter	0.750 inch	6.50 inch
Hex size	0.157 inch	0.625 inch
Head length	0.375 inch	2.25 inch
Shaft diameter	0.4375 inch	4.254 inch
Thread	7/16"-20	2-3/4"-12

8.21 Heavy-Duty Concentric Shafts for Yoke Style Idler-Rollers (Metric)

Engineering expertise and manufacturing skills are what set the Load Runners brand



OSBORN Heavy-Duty Concentric Shafts for Yoke Style Idler-Rollers (metric) consist of items such as MSHA-10, MSHA-15, MSHA-20, MSHA-25, MSHA-30, MSHA-45, MSHA-55, MSHA-70.

Industries it caters to

- Primary Metals
- Oilfield and Petrochemical
- Automotive
- Off-Highway
- Aggregate and Mining
- Kinetic Architecture
- Food and Pharmaceutical

Selection parameters

Parameters	Min	Max
Head diameter	18 mm	108 mm
Hex size	4 mm	12.2 mm
Head length	10 mm	35 mm
Shaft diameter	10 mm	70 mm
Thread	M10×1.0	M70×6

8.22 Heavy-Duty Eccentric Shafts for Yoke Style Idler-Rollers (Inch)

Engineering expertise and manufacturing skills are what set the Load Runners brand



OSBORN Heavy-Duty Eccentric Shafts for Yoke Style Idler-Rollers (Inch) load runner consist of items such as SHE-437, SHE-500, SHE-625, SHE-750, SHE-1000, SHE-1125, SHE-1250, SHE-1750, SHE-2250, SHE-2750.

Industries it caters to

- Primary Metals
- Oilfield and Petrochemical
- Automotive
- Off-Highway
- Aggregate and Mining
- Kinetic Architecture
- Food and Pharmaceutical

Selection parameters

Parameters	Min	Max
Head diameter	0.750 inch	4.25 inch
Hex size	0.156 inch	0.625 inch
Head length	0.375 inch	1.375 inch
Shaft diameter	0.313 inch	2.5 inch
Thread	5/16-18	2-1/2-12

8.23 Double-Flanged Concentric Stud Style (Inch)

Engineering expertise and manufacturing skills are what set the Load Runners brand



Industries it caters to

- Primary Metals
- Oilfield and Petrochemical
- Automotive
- Off-Highway
- Aggregate and Mining
- Kinetic Architecture
- Food and Pharmaceutical

Selection parameters

Parameters	Min	Max
Roller diameter	1.5 inch	3 inch
Roller width	1-3/16 inch	2 inch
Flange diameter	2-3/16 inch	3-15/16 inch
Flange thickness	0.281 inch	0.531 inch
Stud diameter	0.625 inch	1.25 inch
Stud length	1-1/2 inch	2-1/2 inch
Groove width	0.558 inch	0.874 inch
Radial Load static limit	1100 lbs	12263 lbs
Static Thrust	680 lbs	12000 lbs

OSBORN Double-Flanged Concentric Stud Style(inch) load runner consist of items such as FFLR-1-1/2-4, FFLR-2-4, FFLR-2-1/2-4, FFLR-3-4.

8.24 Flanged Crown Concentric (inch)

Engineering expertise and manufacturing skills are what set the Load Runners brand apart.



Industries it caters to

- Primary Metals
- Oilfield and Petrochemical
- Automotive
- Off-Highway
- Aggregate and Mining
- Kinetic Architecture
- Food and Pharmaceutical

Selection parameters

Parameters	Min	Max
Roller diameter	2.5 inch	4 inch
Roller width	1.688 inch	2 inch
Flange diameter	3 inch	4.938 inch
Flange thickness	0.5 inch	0.593 inch
Stud diameter	1 inch	2.5 inch
Stud length	2.25 inch	2.750 inch
Radial Load static limit	2270 lbs	20000 lbs
Static Thrust	1400 lbs	12000 lbs

OSBORN Flanged Crown Concentric (inch) load runner consist of items such as FLRC-2-1/2, FLRC-3, FLRC-4.

8.25 Flanged Crown Eccentric (Inch)

Engineering expertise and manufacturing skills are what set the Load Runners brand apart.



Industries it caters to

- Primary Metals
- Oilfield and Petrochemical
- Automotive
- Off-Highway
- Aggregate and Mining
- Kinetic Architecture
- Food and Pharmaceutical

Selection parameters

Parameters	Min	Max
Roller diameter	2.5 inch	4 inch
Roller width	1.688 inch	2 inch
Flange diameter	3 inch	4.938 inch
Flange thickness	0.5 inch	0.593 inch
Stud diameter	1 inch	2.5 inch
Stud length	2.25 inch	2.750 inch
Radial Load static limit	2270 lbs	20000 lbs
Static Thrust	1400 lbs	12000 lbs

OSBORN Flanged Crown Eccentric (inch) load runner consist of items such as FLRCE-2-1/2, FLRCE-3, FLRCE-4.

8.26 Cam Runner

The two synthetic parts are molded together to form a single mechanically bonded assembly that is mounted on the stud, eliminating the need for conventional seals and lubricants



Industries it caters to

Primary Metals
Oilfield and Petrochemical
Automotive
Off-Highway
Aggregate and Mining
Kinetic Architecture
Food and Pharmaceutical

Selection parameters

Parameters	Min	Max
Roller diameter	0.5 inch	1.625 inch
Roller width	0.406 inch	0.938 inch
Thread	10-32	5/8-18
Thread length	0.25 inch	0.75 inch
Stud diameter	0.188 inch	0.625 inch
Stud length	0.625 inch	1.5 inch
Radial Load static	110 lbs	1800 lbs

8.27 Load Rails

Osborn Load Rails® are made of high-strength steel and machined to tight tolerances, then cut to length and drilled to customer specifications.



Osborn Load Rails are made up of high-strength steel and machined to tight tolerance. They can provide load rails cut to length and drilled as per customer specifications. Osborn load rail in Inch sizes denoted by item numbers such as LRTV-4 XXXX, LRTV-1 XXXX, LRTV-2 XXXX, LRTP-4 XXXX, LRTP-1 XXXX, LRTP-2 XXXX, HPTV-4 XXXX, HPTV-1 XXXX, HPTV-2 XXXX. Osborn load rail in Metric sizes denoted by item numbers such as L/H-MTV-1 XXXX, L/H-MTV-2-XXXX, L/H-MTP-1 XXXX, L/H-MTP-2 XXXX, L/H-MPV-1 XXXX, L/H-MPV-2 XXXX. (XXXX denotes the length of rail).

Industries it caters to

Architectural
Automotive industry
Medical industry
Mining industry
Pharmaceutical industry
Cement industry

Selection parameters

Parameters	Min	Max
Rail length	72 inch	144 inch
Rail height	1 inch	4 inch
Rail width	1 inch	2 inch

8.28 Stainless Steel Concentric Stud Plain Style (Inch)

Engineering expertise and manufacturing skills are what set the Load Runners brand apart. Use where corrosive or other conditions make standard steel rollers unsuitable.



Industries it caters to

Chemical Treatment
Tank Building
Food Processing
Aerospace
Marine
Waste Treatment
Pharmaceutical

Selection parameters

Parameters	Min	Max
roller diameter	1 inch	2.5 inch
roller width	0.781 inch	1.687 inch
Stud diameter	0.437 inch	1 inch
Stud length	1 inch	2.25 inch
Radial Load static	390 lbs	1750 lbs
limit	240 lbs	1080 lbs

OSBORN Stainless Steel Concentric Stud Plain Style (inch) load runner consist of items such as PLRS-1, PLRS-1-1/4, PLRS-1-1/2, PLRS-1-3/4, PLRS-2, PLRS-2-1/2.

8.29 Stainless Steel Concentric Stud V-grooved (Inch)

Engineering expertise and manufacturing skills are what set the Load Runners brand apart. Use where corrosive or other conditions make standard steel rollers unsuitable.



Industries it caters to

Chemical Treatment
Tank Building
Food Processing
Aerospace
Marine
Waste Treatment
Pharmaceutical

Selection parameters

Parameters	Min	Max
roller diameter	1 inch	2.5 inch
roller width	0.781 inch	1.688 inch
Stud diameter	1.375 inch	3.188 inch
Stud length	0.219 inch	0.593 inch
Radial Load static	0.437 inch	1 inch
limit	1 inch	2.25 inch

OSBORN Stainless Steel Concentric Stud V-grooved (inch) load runner consist of items such as VLRS-1-1/2, VLRS-2, VLRS-2-1/2.

8.30 Stainless Steel Concentric Stud Flanged (Inch)

Engineering expertise and manufacturing skills are what set the Load Runners brand apart. Use where corrosive or other conditions make standard steel rollers unsuitable.



Industries it caters to

- Chemical Treatment
- Tank Building
- Food Processing
- Aerospace
- Marine
- Waste Treatment
- Pharmaceutical

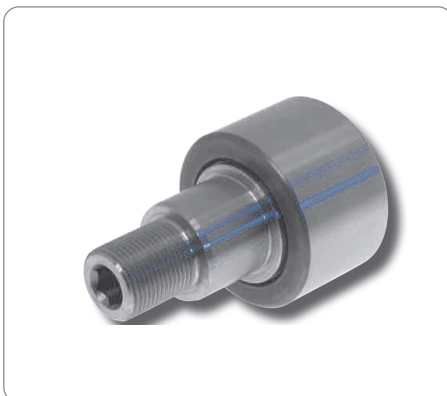
Selection parameters

Parameters	Min	Max
roller diameter	1 inch	2.5 inch
roller width	0.781 inch	1.688 inch
Stud diameter	0.437 inch	3.188 inch
Stud length	1 inch	0.593 inch
Radial Load static	390 lbs	1 inch
limit	240 lbs	2.25 inch

OSBORN Stainless Steel Concentric Stud Flanged (inch) load runner consist of items such as FLRS-1, FLRS-1-1/4, FLRS-1-1/2, FLRS-2, FLRS-2-1/2.

8.31 Stainless Steel Eccentric Stud Plain Style (Inch)

Engineering expertise and manufacturing skills are what set the Load Runners brand apart. Use where corrosive or other conditions make standard steel rollers unsuitable.



Industries it caters to

- Chemical Treatment
- Tank Building
- Food Processing
- Aerospace
- Marine
- Waste Treatment
- Pharmaceutical

Selection parameters

Parameters	Min	Max
roller diameter	1 inch	2.5 inch
roller width	0.781 inch	1.688 inch
Stud diameter	0.437 inch	1 inch
Stud length	1 inch	2.25 inch
Radial Load static	390 lbs	1750 lbs
limit	240 lbs	1080 lbs

OSBORN Stainless Steel Eccentric Stud Plain Style (inch) load runner consist of items such as PLRSE-1, PLRSE-1-1/4, PLRSE-1-1/2, PLRSE-1-3/4, PLRSE-2, PLRSE-2-1/2.

8.32 Stainless Steel Eccentric Stud V-grooved (Inch)

Engineering expertise and manufacturing skills are what set the Load Runners brand apart. Use where corrosive or other conditions make standard steel rollers unsuitable.



Industries it caters to

- Chemical Treatment
- Tank Building
- Food Processing
- Aerospace
- Marine
- Waste Treatment
- Pharmaceutical

Selection parameters

Parameters	Min	Max
roller diameter	1.5 inch	2.5 inch
roller width	0.781 inch	1.312 inch
Point diameter	1.125 inch	1.5 inch
Groove location	0.391 inch	0.687 inch
Stud diameter	0.437 inch	0.75 inch
Stud length	1 inch	1.75 inch
Radial Load static limit	390 lbs	1110 lbs
	240 lbs	690 lbs

OSBORN Stainless Steel Eccentric Stud V-grooved (inch) load runner consist of items such as VLRSE-1-1/2, VLRSE-2, VLRSE-2-1/2.

8.33 Stainless Steel Eccentric Stud Flanged (Inch)

Engineering expertise and manufacturing skills are what set the Load Runners brand apart. Use where corrosive or other conditions make standard steel rollers unsuitable.



Industries it caters to

- Chemical Treatment
- Tank Building
- Food Processing
- Aerospace
- Marine
- Waste Treatment
- Pharmaceutical

Selection parameters

Parameters	Min	Max
roller diameter	1 inch	2.5 inch
roller width	0.781 inch	1.688 inch
Point diameter	1.375 inch	3.188 inch
Groove location	0.219 inch	0.593 inch
Stud diameter	0.437 inch	1 inch
Stud length	1 inch	2.25 inch
Radial Load static limit	390 lbs	1750 lbs
	240 lbs	1080 lbs

OSBORN Stainless Steel Eccentric Stud flanged (inch) load runner consist of items such as FLRSE-1, FLRSE-1-1/4, FLRSE-1-1/2,

8.34 High Temp Load Runners Concentric V-grooved (Inch)

Engineering expertise and manufacturing skills are what set the Load Runners brand apart. For ovens, galvanizing lines, heat treat furnaces, and industrial dryers.



Industries it caters to

Paper Mills
Steel Mills
Aluminum Mills
Foundries
Food Processing
Aerospacet

Selection parameters

Parameters	Min	Max
roller diameter	1.5 inch
roller width	0.781 inch	
Point diameter	1.125 inch	
Groove location	0.391 inch	
Stud diameter	0.437 inch	
Stud length	1 inch	
Radial Load static	390 lbs	
limit	240 lbs	

OSBORN High Temp Load Runners concentric V Grooved (inch) load runner consist of items such as VLRH-1-1/2, VLRH-2, VLRH-2-1/2,-VLRH-2-1/2.

8.35 High Temp Load Runners Concentric Flanged (Inch)

Engineering expertise and manufacturing skills are what set the Load Runners brand apart. For ovens, galvanizing lines, heat treat furnaces, and industrial dryers.



Industries it caters to

Paper Mills
Steel Mills
Aluminum Mills
Foundries
Food Processing
Aerospacet

Selection parameters

Parameters	Min	Max
roller diameter	1 inch	2.5 inch
roller width	0.781 inch	1.688 inch
Point diameter	1.375 inch	3.188 inch
Groove location	0.219 inch	0.593 inch
Stud diameter	0.437 inch	1 inch
Stud length	1 inch	2.25 inch
Radial Load static	390 lbs	1750 lbs
limit	240 lbs	1080 lbs

OSBORN High Temp Load Runners concentric Flanged Style (inch) load runner consist of items such as FLRH-1, FLRH-1-1/4, FLRH-1-1/2, FLRH-2, FLRH-2-1/2.

8.36 High Temp Load Runners Concentric Plain Style (Inch)

Engineering expertise and manufacturing skills are what set the Load Runners brand apart. Cost-effective performance in applications requiring a non-metallic outer face.



Industries it caters to

Racking & Storage
Retrival SystemsFood
Processing
Postal Systems
Medical Equipment

Selection parameters

Parameters	Min	Max
Roller diameter	1 inch	2.5 inch
Roller width	0.781 inch	1.687 inch
Stud diameter	0.437 inch	1 inch
Stud length	1 inch	2.25 inch
Radial Load static limit	230 lbs	2270 lbs
Static Thrust	140 lbs	1400 lbs

OSBORN High Temp Load Runners concentric Plain Style (inch) load runner consist of items such as PLRH-1, PLRH-1-1/4, PLRH-1-1/2, PLRH-2, PLRH-2-1/2.

8.37 Nylon Tread Load Runners – Concentric Stud Style (Inch)

Engineering expertise and manufacturing skills are what set the Load Runners brand apart. Cost-effective performance in applications requiring a non-metallic outer face.



Industries it caters to

Racking & Storage
Retrival SystemsFood
Processing
Postal Systems
Medical Equipment

Selection parameters

Parameters	Min	Max
Roller diameter	1 inch	2.5 inch
Roller width	0.781 inch	1.687 inch
Stud diameter	0.437 inch	1 inch
Stud length	1 inch	2.25 inch
Radial Load static limit	230 lbs	2270 lbs
Static Thrust	140 lbs	1400 lbs

OSBORN Nylon Tread Load Runners - Concentric stud style (inch) consist of items such as PLRN-1, PLRN-1-1/4, PLRN-1-1/2, PLRN-2, PLRN-2-1/2.

8.38 Nylon Tread Load Runners – Eccentric Stud Style (Inch)

Engineering expertise and manufacturing skills are what set the Load Runners brand apart. Cost-effective performance in applications requiring a non-metallic outer face.



Industries it caters to

Racking & Storage
Retrival SystemsFood
Processing
Postal Systems
Medical Equipment

Selection parameters

Parameters	Min	Max
Roller diameter	1 inch	2.5 inch
Roller width	0.781 inch	1.687 inch
Stud diameter	0.437 inch	1 inch
Stud length	1 inch	2.25 inch
Radial Load static limit	230 lbs	2270 lbs
Static Thrust	140 lbs	1400 lbs

OSBORN Nylon Tread Load Runners - Eccentric stud style (inch) consist of items such as PLRNE-1, PLRNE-1-1/4, PLRNE-1-1/2, PLRNE-2, PLRNE-2-1/2.

8.39 Urethane Tread Concentric (Inch)

Engineering expertise and manufacturing skills are what set the Load Runners brand apart. Cost-effective performance in applications requiring a non-metallic outer face.



Industries it caters to

Medical Equipment
Construction Sites
Postage Systems

Selection parameters

Parameters	Min	Max
Roller diameter	1 inch	2.75 inch
Roller width	0.781 inch	1.687 inch
Stud diameter	0.437 inch	1 inch
Stud length	1 inch	2.25 inch
Radial capacity	230 lbs	1980 lbs
Tread capacity	80 lbs	420 lbs
Tread speed limit	300 RPM	850 RPM

OSBORN Urethane Tread Concentric (Inch) load runner consist of items such as PLRU-1, PLRU-1-1/8, PLRU-1-1/4, PLRU-1-3/8, PLRU-1-1/2, PLRU-1-3/4, PLRU-2, PLRU-2-1/4, PLRU-2-1/2, PLRU-2-3/4.

8.40 Urethane Tread Eccentric (Inch)

Engineering expertise and manufacturing skills are what set the Load Runners brand apart. Proven in special applications calling for a wear-resistant, nonmetallic rolling surface.



Industries it caters to

Medical Equipment
Construction Sites
Postage Systems

Selection parameters

Parameters	Min	Max
Roller diameter	1 inch	2.75 inch
Roller width	0.781 inch	1.687 inch
Stud diameter	0.437 inch	1 inch
Stud length	1 inch	2.25 inch
Radial capacity	230 lbs	1980 lbs
Tread capacity	80 lbs	420 lbs
Tread speed limit	300 RPM	850 RPM

OSBORN Urethane Tread Eccentric (Inch) load runner consist of items such as PLRUE-1, PLRUE-1-1/8, PLRUE-1-1/4, PLRUE-1-3/8, PLRUE-1-1/2, PLRUE-1-3/4, PLRUE-2, PLRUE-2-1/4, PLRUE-2-1/2, PLRUE-2-3/4.